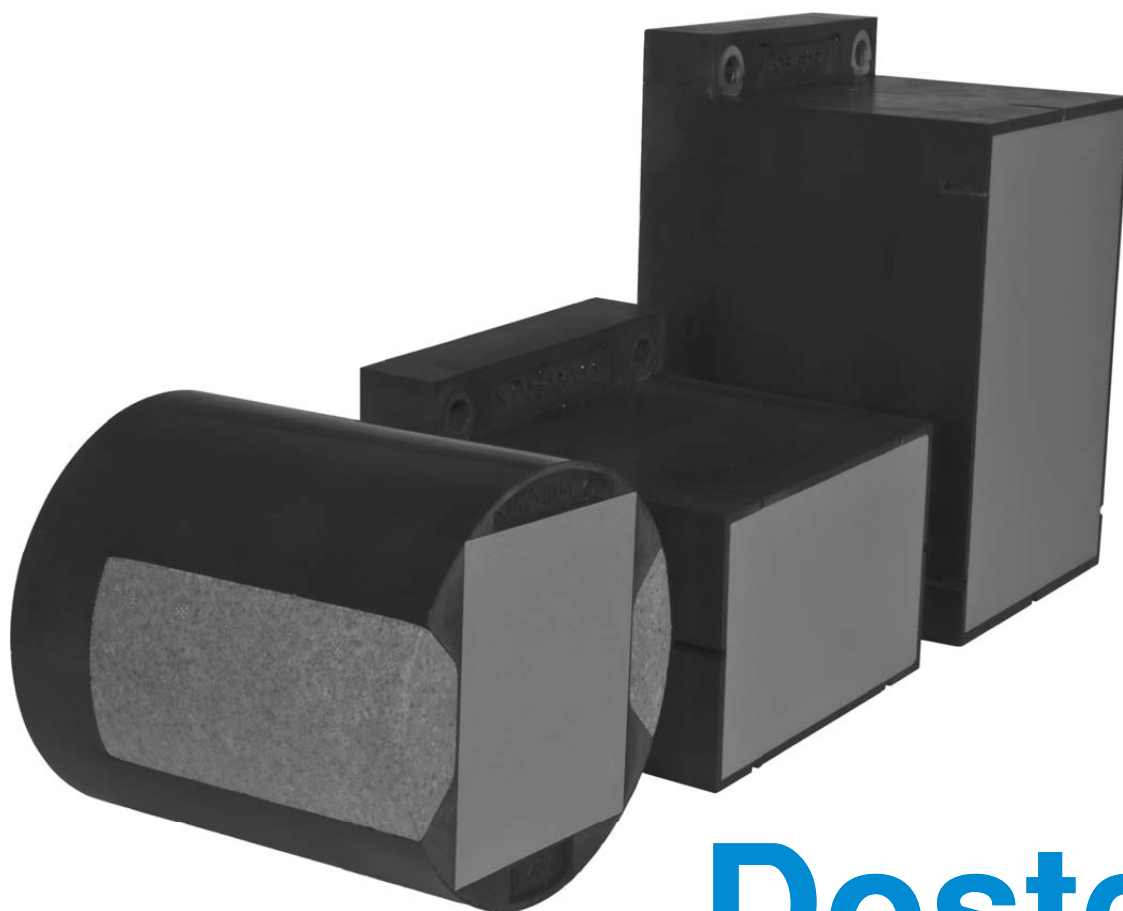




Universal fixation plate UMP®-ALU-TZ / -TQ / -TR

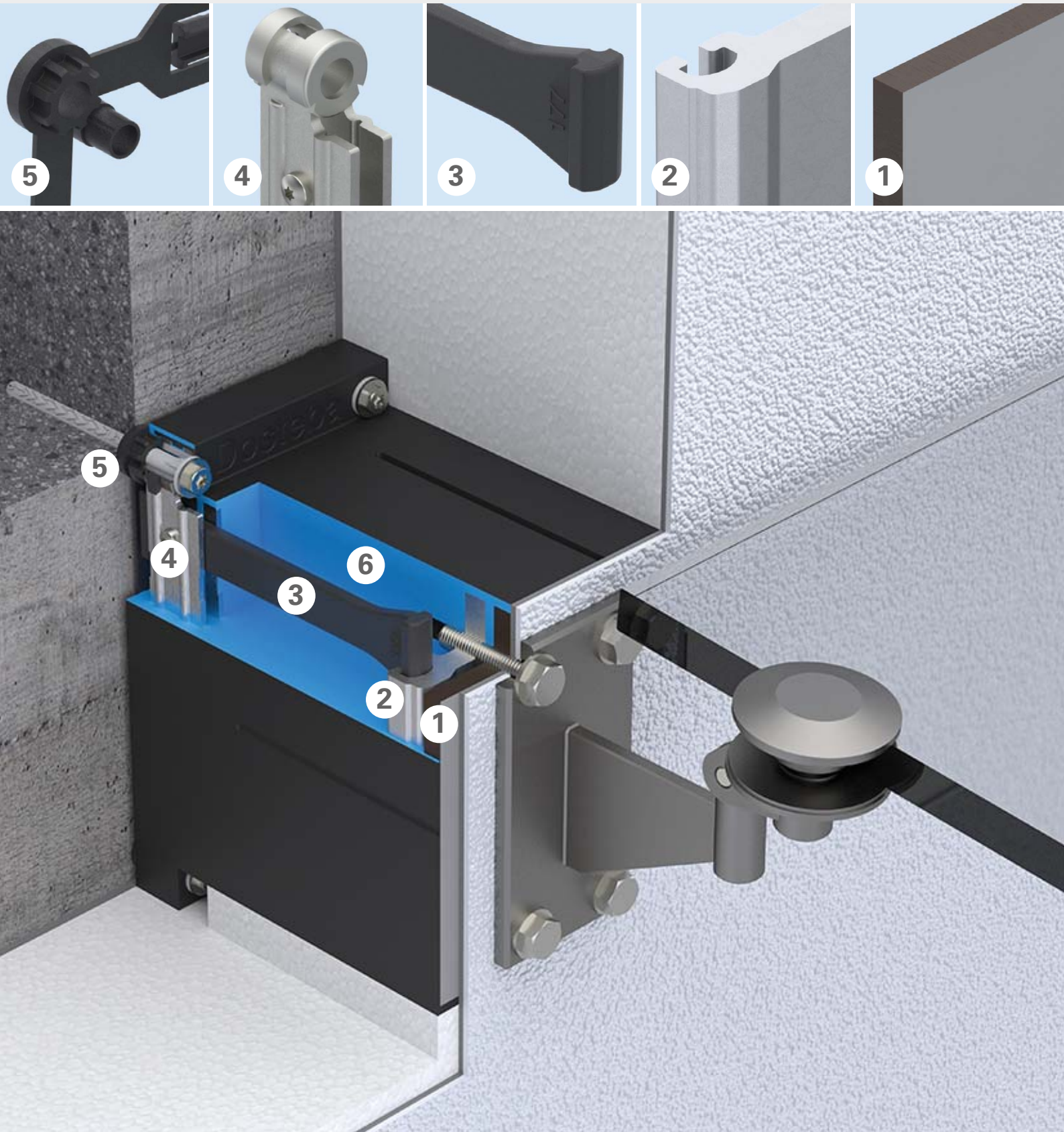


Dosteba

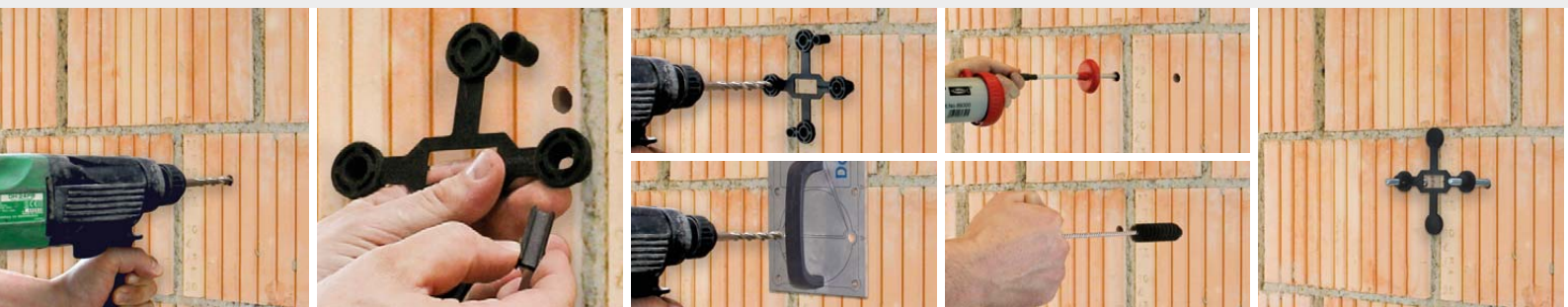
*Elemente sind
Elements are
unsere Stärke
our strength*

Universal fixation plate UMP[®]-ALU-TZ / -TQ / -TR

Thermal bridge-free fixation in thermal insulation composite systems



Assembly



Fastening material, tools and loads



Recommended loads by Dosteba

Material safety coefficient γ_M and safety coefficient of impact $\gamma_F = 1.40$ are included.

		UMP®-ALU-TZ	UMP®-ALU-TQ	UMP®-ALU-TR
vertical	$F_{V,empf}$	0.74 - 3.35	1.60 - 8.20	4.30 - 12.60
	$F_{Z,empf}$	6.60 - 7.45	14.00 - 18.30	16.00 - 18.90
	$F_{D,empf}$	16.30 - 17.70	24.50 - 27.80	33.80 - 37.90
	M_{empf}	0.21	0.49 - 0.53	1.30 - 1.45
horizontal	$F_{V,empf}$	0.79 - 3.00	3.25 - 5.70	3.15 - 6.60
	$F_{Z,empf}$	6.60 - 7.45	14.00 - 18.30	16.00 - 18.90
	$F_{D,empf}$	16.30 - 17.70	24.50 - 27.80	33.80 - 37.90
	M_{empf}	0.17 - 0.20	0.71 - 0.95	0.94 - 1.05

$F_{V,empf}$ kN Recommended transverse force on fixation element

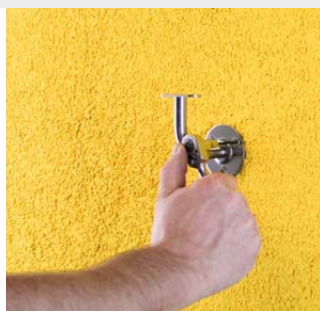
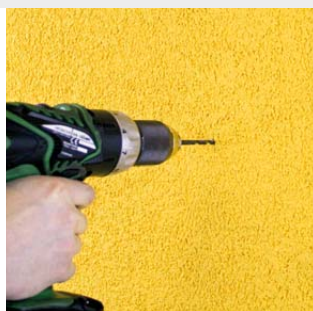
$F_{D,empf}$ kN Recommended compression force on fixation element

$F_{Z,empf}$ kN Recommended tensile force on fixation element

M_{empf} kNm Recommended bending force on fixation element

Further information and explanations can be found in the current technical documentation. The provisions of the ETA-20/0798 apply as standard for safety-related loads.

- 1 Compact plate (HPL) for optimum pressure distribution on the surface
- 2 Aluminium plate for screwing the attachment part
- 3 Tension rods made of a low-fibre synthetic material (polyamide) guarantee the required stability
- 4 Steel console for friction-type screw assembly with the masonry
- 5 The support is used as a drill and setting gauge and indicates the adhesive layer thickness in the event of an offset
- 6 PU foam with a volumetric weight of 350 kg/m³
- 7 Screw-plug SXRL 10 x 120 FUS
- 8 Injection-threaded rod
- FIS A M8 x 150 (for masonry)
- FIS A M8 x 130 (for concrete)
- 9 Injection-anchor sleeve FIS H 12 x 85 K
- 10 Injection-mortar FIS V Plus 300 T
- 11 Static mixer FIS S
- 12 Corrosion protection spray FTC-CP
- 13 Milling toolset comprising of:
- 1 Spindle for milling depths up to 200 mm
- 1 Adjusting ring with pin wrench
- 1 Milling tool with bell-shaped guide
- 1 Milling tool disks Ø125 mm
- 14 Hard metal-hammer drill
- Ø10 mm, drill length 210 mm
- Ø12 mm, drill length 210 mm
- 15 Tool set comprising:
- 2 Coupling shafts 150 mm
- 2 Bits Torx T40
- 16 Drilling gauge UMP® / TRA-WIK® / TWL®
- 17 Ejector pistol ABG
- 18 Set of brushes FIS, Ø14 / 20 mm
- 19 Cleaning brush BS, Ø10 mm / M8
- 20 Open-end wrench, wrench size 13
- 21 Cartridge press





Universal fixation plate UMP®-ALU-TZ / -TQ / -TR

The problem

Infiltrations in thermal insulation composite systems constitute an increased risk for water entering or the formation of condensate water and mould.

The solution

With the universal fixation plates UMP®-ALU-TZ / -TQ / -TR these high demands can be certainly met. Heavy loads can be attached securely and with a power-grip using UMP®-ALU-TZ / -TQ / -TR.

Your benefit

The support plate facilitates drilling and the placement of threaded rods. In addition, fixation can be completed in one work step. This saves time and reduces your costs.

Your advantages

- ✓ No thermal bridges
- ✓ No water infiltration
- ✓ No damages
- ✓ Power-grip assembly for heavy loads

The product

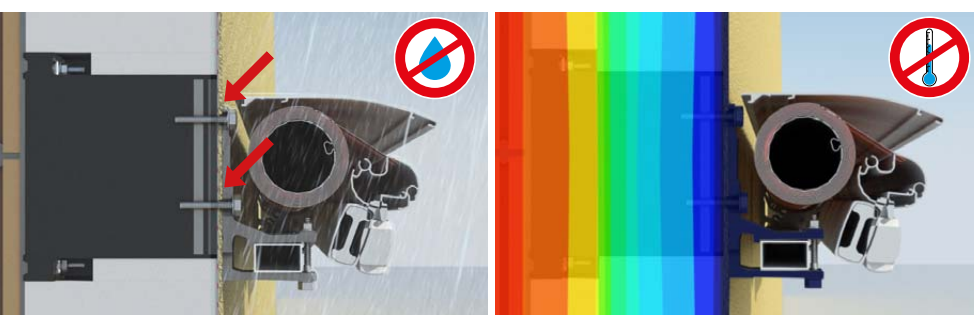
Universal fixation plates UMP®-ALU-TZ / -TQ / -TR are made of black-coloured, rot-resistant CFC-free PU rigid foam (polyurethane) with four foamed steel consoles for friction-type screw assembly with the masonry, an aluminium plate for screwing the attachment part and a compact plate (HPL), to ensure optimum surface pressure distribution. Tension rods made of a low-fibre synthetic material (polyamide) guarantee the required stability.

- Base surface (-TZ): Ø125 mm
- Base surface (-TQ): 138 x 138 mm
- Base surface (-TR): 238 x 138 mm
- Thicknesses: 80 – 300 mm
- Useable surface area (-TZ): 75 x 36 mm
- Useable surface area (-TQ): 80 x 62 mm
- Useable surface area (-TR): 162 x 80 mm

Test certificates / Assessments



European Technical Assessment
ETA-20 / 0798 for UMP®-ALU-TR



Dosteba AG

CH-8184 Bachenbülach
Phone: +41 43 277 66 00

Dosteba GmbH

D-72770 Reutlingen
Phone: +49 7121 30177 10